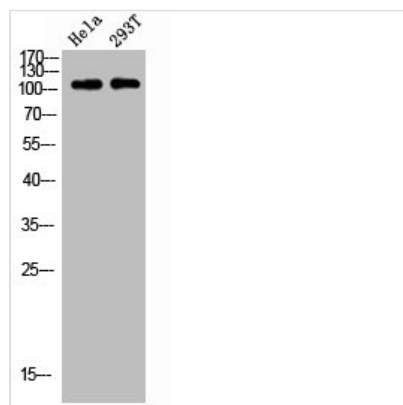




RPS6KC1 Antibody

Product Code	CSB-PA008805
Storage	Upon receipt, store at -20°C or -80°C. Avoid repeated freeze.
Uniprot No.	Q96S38
Immunogen	Synthesized peptide derived from the Internal region of Human p52 S6 kinase.
Raised In	Rabbit
Species Reactivity	Human, Mouse
Tested Applications	WB, IF, ELISA; WB:1:500-1:2000, IF:1:200-1:1000, ELISA:1:20000
Form	Liquid
Conjugate	Non-conjugated
Storage Buffer	Liquid in PBS containing 50% glycerol, 0.5% BSA and 0.02% sodium azide.
Purification Method	The antibody was affinity-purified from rabbit antiserum by affinity-chromatography using epitope-specific immunogen.
Isotype	IgG
Alias	RPS6KC1; RPK118; Ribosomal protein S6 kinase delta-1; S6K-delta-1; 52 kDa ribosomal protein S6 kinase; Ribosomal S6 kinase-like protein with two PSK domains 118 kDa protein; SPHK1-binding protein
Immunogen Species	Homo sapiens (Human)
Target Names	RPS6KC1

Image



Western blot analysis of HELA 293T lysis using p52 S6 kinase antibody.

Usage For Research Use Only. Not for use in diagnostic or therapeutic procedures.