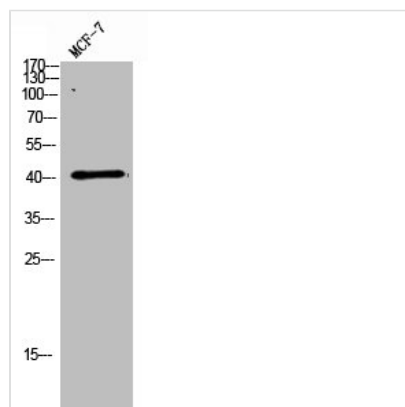




LAMP3 Antibody

Product Code	CSB-PA008859
Storage	Upon receipt, store at -20°C or -80°C. Avoid repeated freeze.
Uniprot No.	Q9UQV4
Immunogen	Synthesized peptide derived from the Internal region of Human DC-LAMP.
Raised In	Rabbit
Species Reactivity	Human
Tested Applications	WB, IHC, ELISA; IHC:1:100-1:300, ELISA:1:40000
Form	Liquid
Conjugate	Non-conjugated
Storage Buffer	Liquid in PBS containing 50% glycerol, 0.5% BSA and 0.02% sodium azide.
Purification Method	The antibody was affinity-purified from rabbit antiserum by affinity-chromatography using epitope-specific immunogen.
Isotype	IgG
Alias	LAMP3; DCLAMP; TSC403; Lysosome-associated membrane glycoprotein 3; LAMP-3; Lysosomal-associated membrane protein 3; DC-lysosome-associated membrane glycoprotein; DC LAMP; Protein TSC403; CD antigen CD208
Immunogen Species	Homo sapiens (Human)
Target Names	LAMP3

Image



Western Blot analysis of MCF7 cells using DC-LAMP Polyclonal Antibody