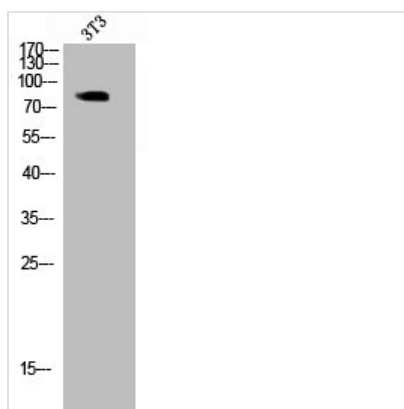




Phospho-GYS1 (S645) Antibody

| | |
|----------------------------|---|
| Product Code | CSB-PA009063 |
| Storage | Upon receipt, store at -20°C or -80°C. Avoid repeated freeze. |
| Uniprot No. | P13807 |
| Immunogen | Synthesized peptide derived from Human Glycogen Synthase 1 around the phosphorylation site of S645. |
| Raised In | Rabbit |
| Species Reactivity | Human,Mouse,Rat |
| Tested Applications | WB, IHC, ELISA; WB:1:500-1:2000, IHC:1:100-1:300, ELISA:1:5000 |
| Form | Liquid |
| Conjugate | Non-conjugated |
| Storage Buffer | Liquid in PBS containing 50% glycerol, 0.5% BSA and 0.02% sodium azide. |
| Purification Method | The antibody was affinity-purified from rabbit antiserum by affinity-chromatography using epitope-specific immunogen. |
| Isotype | IgG |
| Alias | GYS1; GYS; Glycogen [starch] synthase; muscle |
| Immunogen Species | Homo sapiens (Human) |
| Target Names | GYS1 |

Image



Western Blot analysis of 293 cells using Phospho-Glycogen Synthase 1 (S645) Polyclonal Antibody

Usage

For Research Use Only. Not for use in diagnostic or therapeutic procedures.