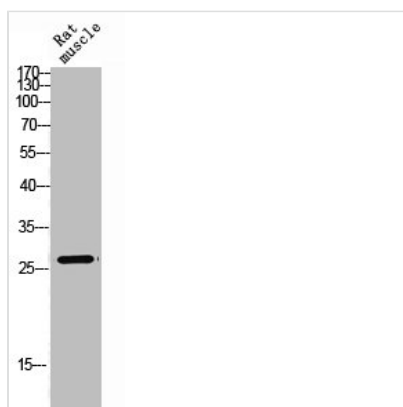




HOXC6 Antibody

| | |
|----------------------------|---|
| Product Code | CSB-PA009248 |
| Storage | Upon receipt, store at -20°C or -80°C. Avoid repeated freeze. |
| Uniprot No. | P09630 |
| Immunogen | Synthesized peptide derived from the C-terminal region of Human Hox-C6. |
| Raised In | Rabbit |
| Species Reactivity | Human, Mouse |
| Tested Applications | WB, IHC, IF, ELISA; WB:1:500-1:2000, IHC:1:100-1:300, IF:1:200-1:1000, ELISA:1:10000 |
| Form | Liquid |
| Conjugate | Non-conjugated |
| Storage Buffer | Liquid in PBS containing 50% glycerol, 0.5% BSA and 0.02% sodium azide. |
| Purification Method | The antibody was affinity-purified from rabbit antiserum by affinity-chromatography using epitope-specific immunogen. |
| Isotype | IgG |
| Alias | HOXC6; HOX3C; Homeobox protein Hox-C6; Homeobox protein CP25; Homeobox protein HHO.C8; Homeobox protein Hox-3C |
| Immunogen Species | Homo sapiens (Human) |
| Target Names | HOXC6 |

Image



Western Blot analysis of RAT-MUSCLE cells using Hox-C6 Polyclonal Antibody

Usage For Research Use Only. Not for use in diagnostic or therapeutic procedures.