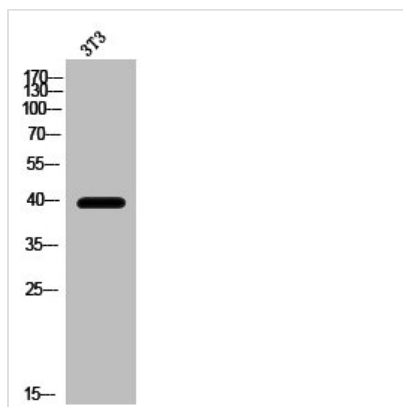




HRH2 Antibody

Product Code	CSB-PA009281
Storage	Upon receipt, store at -20°C or -80°C. Avoid repeated freeze.
Uniprot No.	P25021
Immunogen	Synthesized peptide derived from the Internal region of Human Histamine H2 Receptor.
Raised In	Rabbit
Species Reactivity	Human
Tested Applications	WB, IF, ELISA; WB:1:500-1:2000, IF:1:200-1:1000, ELISA:1:5000
Form	Liquid
Conjugate	Non-conjugated
Storage Buffer	Liquid in PBS containing 50% glycerol, 0.5% BSA and 0.02% sodium azide.
Purification Method	The antibody was affinity-purified from rabbit antiserum by affinity-chromatography using epitope-specific immunogen.
Isotype	IgG
Alias	HRH2; Histamine H2 receptor; H2R; HH2R; Gastric receptor I
Immunogen Species	Homo sapiens (Human)
Target Names	HRH2

Image



Western Blot analysis of 3T3 cells using Histamine H2 Receptor Polyclonal Antibody