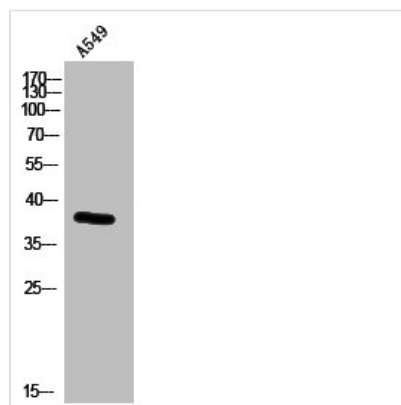




RXFP4 Antibody

Product Code	CSB-PA009402
Storage	Upon receipt, store at -20°C or -80°C. Avoid repeated freeze.
Uniprot No.	Q8TDU9
Immunogen	Synthesized peptide derived from the C-terminal region of Human GPR100.
Raised In	Rabbit
Species Reactivity	Human
Tested Applications	WB, IF, ELISA; WB:1:500-1:2000, IF:1:200-1:1000, ELISA:1:20000
Form	Liquid
Conjugate	Non-conjugated
Storage Buffer	Liquid in PBS containing 50% glycerol, 0.5% BSA and 0.02% sodium azide.
Purification Method	The antibody was affinity-purified from rabbit antiserum by affinity-chromatography using epitope-specific immunogen.
Isotype	IgG
Alias	RXFP4; GPR100; RLN3R2; Relaxin-3 receptor 2; RLN3 receptor 2; G-protein coupled receptor 100; G-protein coupled receptor GPCR142; Insulin-like peptide INSL5 receptor; Relaxin family peptide receptor 4
Immunogen Species	Homo sapiens (Human)
Target Names	RXFP4

Image



Western Blot analysis of A549 cells using GPR100 Polyclonal Antibody

Usage For Research Use Only. Not for use in diagnostic or therapeutic procedures.