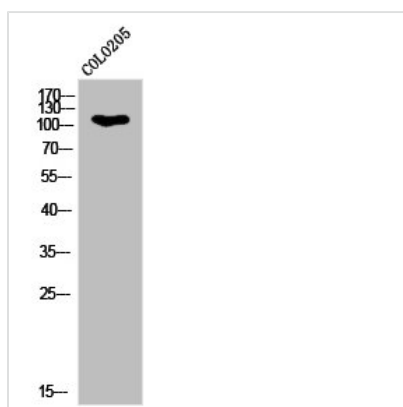




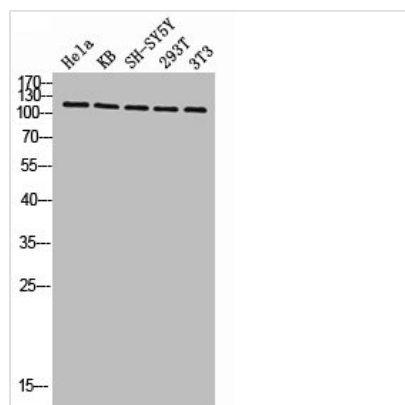
Phospho-KIF11 (T926) Antibody

Product Code	CSB-PA009660
Storage	Upon receipt, store at -20°C or -80°C. Avoid repeated freeze.
Uniprot No.	P52732
Immunogen	Synthesized peptide derived from Human Eg5 around the phosphorylation site of T926.
Raised In	Rabbit
Species Reactivity	Human
Tested Applications	WB, ELISA; WB:1:500-1:2000, ELISA:1:5000
Form	Liquid
Conjugate	Non-conjugated
Storage Buffer	Liquid in PBS containing 50% glycerol, 0.5% BSA and 0.02% sodium azide.
Purification Method	The antibody was affinity-purified from rabbit antiserum by affinity-chromatography using epitope-specific immunogen.
Isotype	IgG
Alias	KIF11; EG5; KNSL1; TRIP5; Kinesin-like protein KIF11; Kinesin-like protein 1; Kinesin-like spindle protein HKSP; Kinesin-related motor protein Eg5; Thyroid receptor-interacting protein 5; TR-interacting protein 5; TRIP-5
Immunogen Species	Homo sapiens (Human)
Target Names	KIF11

Image



Western Blot analysis of COLO205 cells using Phospho-Eg5 (T926) Polyclonal Antibody



Western blot analysis of HELA KB SH-SY5Y 293T 3T3 lysis using Phospho-Eg5 (T926) antibody.