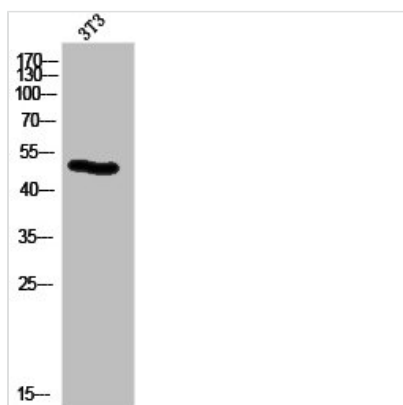




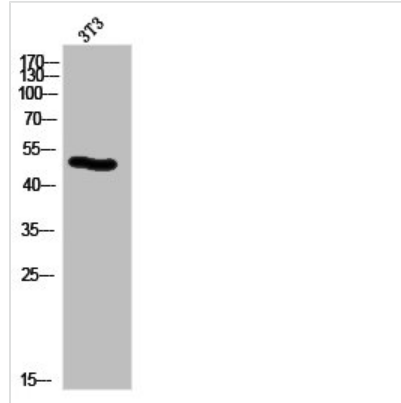
KRT14/KRT16 Antibody

Product Code	CSB-PA009664
Storage	Upon receipt, store at -20°C or -80°C. Avoid repeated freeze.
Uniprot No.	P02533/P08779
Immunogen	Synthesized peptide derived from the N-terminal region of Human Cytokeratin 14/16.
Raised In	Rabbit
Species Reactivity	Human, Mouse, Rat
Tested Applications	WB, IHC, IF, ELISA; WB:1:500-1:2000, IHC:1:100-1:300, IF:1:200-1:1000, ELISA:1:20000
Form	Liquid
Conjugate	Non-conjugated
Storage Buffer	Liquid in PBS containing 50% glycerol, 0.5% BSA and 0.02% sodium azide.
Purification Method	The antibody was affinity-purified from rabbit antiserum by affinity-chromatography using epitope-specific immunogen.
Isotype	IgG
Alias	KRT14; Keratin; type I cytoskeletal 14; Cytokeratin-14; CK-14; Keratin-14; K14; KRT16; KRT16A; Keratin, type I cytoskeletal 16; Cytokeratin-16; CK-16; Keratin-16; K16
Immunogen Species	Homo sapiens (Human)
Target Names	KRT14/KRT16

Image



Western Blot analysis of 3T3 cells using Cytokeratin 14/16 Polyclonal Antibody



Western Blot analysis of NIH-3T3 cells using Cytokeratin 14/16 Polyclonal Antibody

Usage

For Research Use Only. Not for use in diagnostic or therapeutic procedures.