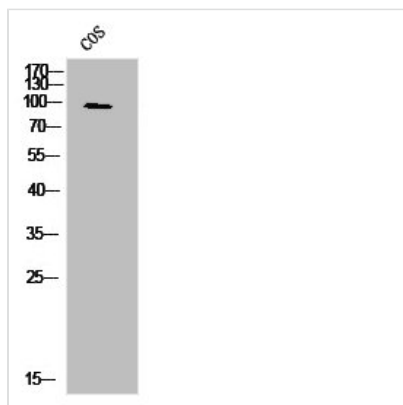




LEPR Antibody

Product Code	CSB-PA009807
Storage	Upon receipt, store at -20°C or -80°C. Avoid repeated freeze.
Uniprot No.	P48357
Immunogen	Synthesized peptide derived from Human Ob-R around the non-phosphorylation site of Y1141.
Raised In	Rabbit
Species Reactivity	Human, Mouse, Monkey
Tested Applications	WB, IHC, ELISA; WB:1:500-1:2000, IHC:1:100-1:300, ELISA:1:20000
Form	Liquid
Conjugate	Non-conjugated
Storage Buffer	Liquid in PBS containing 50% glycerol, 0.5% BSA and 0.02% sodium azide.
Purification Method	The antibody was affinity-purified from rabbit antiserum by affinity-chromatography using epitope-specific immunogen.
Isotype	IgG
Alias	LEPR; DB; OBR; Leptin receptor; LEP-R; HuB219; OB receptor; OB-R; CD antigen CD295
Immunogen Species	Homo sapiens (Human)
Target Names	LEPR

Image



Western Blot analysis of COS7 cells using Ob-R Polyclonal Antibody

Usage For Research Use Only. Not for use in diagnostic or therapeutic procedures.