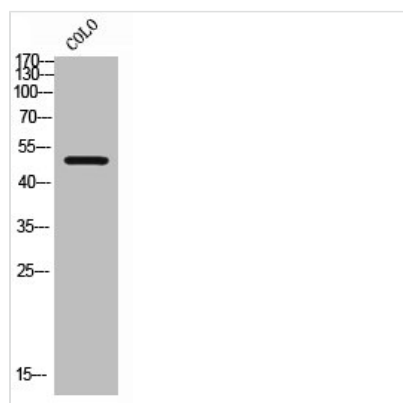




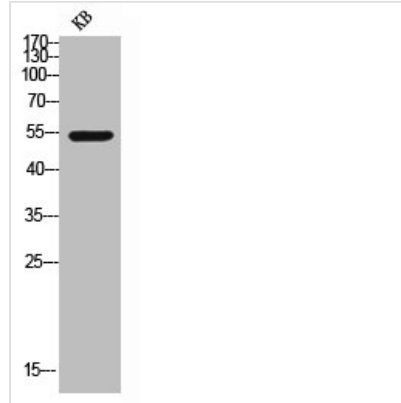
SMAD2 Antibody

Product Code	CSB-PA009952
Storage	Upon receipt, store at -20°C or -80°C. Avoid repeated freeze.
Uniprot No.	Q15796
Immunogen	Synthesized peptide derived from Human Smad2 around the non-phosphorylation site of S467.
Raised In	Rabbit
Species Reactivity	Human,Mouse,Rat
Tested Applications	WB, IHC, IF, ELISA; WB:1:500-1:2000, IHC:1:100-1:300, IF:1:200-1:1000, ELISA:1:5000
Form	Liquid
Conjugate	Non-conjugated
Storage Buffer	Liquid in PBS containing 50% glycerol, 0.5% BSA and 0.02% sodium azide.
Purification Method	The antibody was affinity-purified from rabbit antiserum by affinity-chromatography using epitope-specific immunogen.
Isotype	IgG
Alias	SMAD2; MADH2; MADR2; Mothers against decapentaplegic homolog 2; MAD homolog 2; Mothers against DPP homolog 2; JV18-1; Mad-related protein 2; hMAD-2; SMAD family member 2; SMAD 2; Smad2; hSMAD2
Immunogen Species	Homo sapiens (Human)
Target Names	SMAD2

Image



Western Blot analysis of COLO cells using Smad2 Polyclonal Antibody



Western blot analysis of KB lysis using Smad2 antibody.

Usage

For Research Use Only. Not for use in diagnostic or therapeutic procedures.