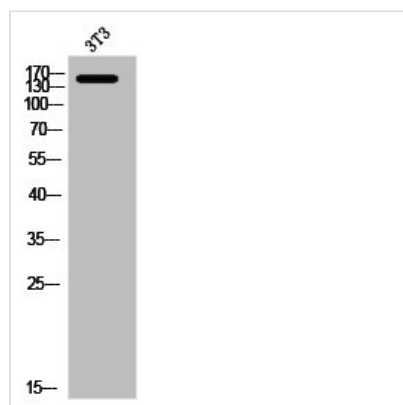




MRC1 Antibody

Product Code	CSB-PA010220
Storage	Upon receipt, store at -20°C or -80°C. Avoid repeated freeze.
Uniprot No.	P22897
Immunogen	Synthesized peptide derived from the Internal region of Human CD206.
Raised In	Rabbit
Species Reactivity	Human,Mouse,Rat
Tested Applications	WB, ELISA; WB:1:500-1:2000, ELISA:1:20000
Form	Liquid
Conjugate	Non-conjugated
Storage Buffer	Liquid in PBS containing 50% glycerol, 0.5% BSA and 0.02% sodium azide.
Purification Method	The antibody was affinity-purified from rabbit antiserum by affinity-chromatography using epitope-specific immunogen.
Isotype	IgG
Alias	MRC1; CLEC13D; CLEC13DL; MRC1L1; Macrophage mannose receptor 1; MMR; C-type lectin domain family 13 member D; C-type lectin domain family 13 member D-like; Macrophage mannose receptor 1-like protein 1; CD antigen CD206
Immunogen Species	Homo sapiens (Human)
Target Names	MRC1

Image



Western Blot analysis of 3T3 cells using CD206 Polyclonal Antibody

Usage

For Research Use Only. Not for use in diagnostic or therapeutic procedures.