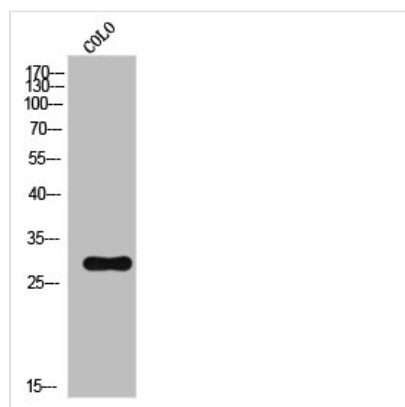




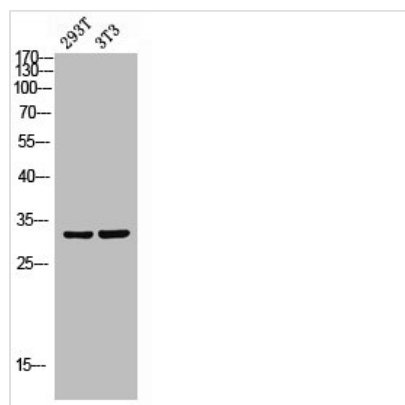
ATF1 Antibody

| | |
|----------------------------|---|
| Product Code | CSB-PA020019 |
| Storage | Upon receipt, store at -20°C or -80°C. Avoid repeated freeze. |
| Uniprot No. | P18846 |
| Immunogen | Synthesized peptide derived from Human ATF-1 around the non-phosphorylation site of S63. |
| Raised In | Rabbit |
| Species Reactivity | Human, Mouse |
| Tested Applications | WB, IHC, ELISA; WB:1:500-1:2000, IHC:1:100-1:300, ELISA:1:5000 |
| Form | Liquid |
| Conjugate | Non-conjugated |
| Storage Buffer | Liquid in PBS containing 50% glycerol, 0.5% BSA and 0.02% sodium azide. |
| Purification Method | The antibody was affinity-purified from rabbit antiserum by affinity-chromatography using epitope-specific immunogen. |
| Isotype | IgG |
| Alias | ATF1; Cyclic AMP-dependent transcription factor ATF-1; cAMP-dependent transcription factor ATF-1; Activating transcription factor 1; Protein TREB36 |
| Immunogen Species | Homo sapiens (Human) |
| Target Names | ATF1 |

Image



Western Blot analysis of COLO cells using ATF-1 Polyclonal Antibody



Western blot analysis of 293T 3T3 lysis using ATF-1 antibody.