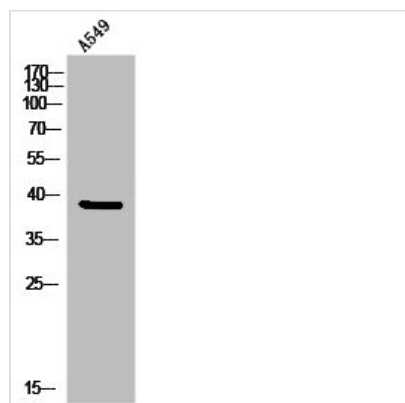




ATF4 Antibody

Product Code	CSB-PA020026
Storage	Upon receipt, store at -20°C or -80°C. Avoid repeated freeze.
Uniprot No.	P18848
Immunogen	Synthesized peptide derived from Human CREB-2 around the non-phosphorylation site of S219.
Raised In	Rabbit
Species Reactivity	Human, Mouse
Tested Applications	WB, ELISA; WB:1:500-1:2000, ELISA:1:10000
Form	Liquid
Conjugate	Non-conjugated
Storage Buffer	Liquid in PBS containing 50% glycerol, 0.5% BSA and 0.02% sodium azide.
Purification Method	The antibody was affinity-purified from rabbit antiserum by affinity-chromatography using epitope-specific immunogen.
Isotype	IgG
Alias	ATF4; CREB2; TXREB; Cyclic AMP-dependent transcription factor ATF-4; cAMP-dependent transcription factor ATF-4; Activating transcription factor 4; Cyclic AMP-responsive element-binding protein 2; CREB-2; cAMP-responsive element-binding prot
Immunogen Species	Homo sapiens (Human)
Target Names	ATF4

Image



Western Blot analysis of A549 cells using CREB-2 Polyclonal Antibody

Usage

For Research Use Only. Not for use in diagnostic or therapeutic procedures.