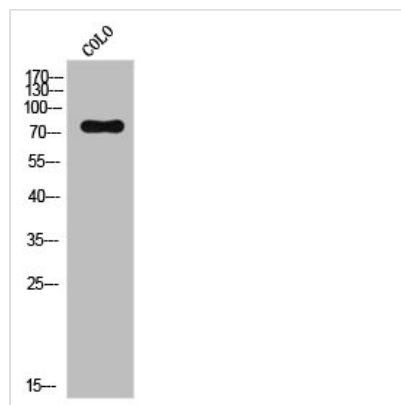




NSF Antibody

Product Code	CSB-PA020159
Storage	Upon receipt, store at -20°C or -80°C. Avoid repeated freeze.
Uniprot No.	P46459
Immunogen	Synthesized peptide derived from the Internal region of Human NSF.
Raised In	Rabbit
Species Reactivity	Human,Mouse,Rat
Tested Applications	WB, ELISA; WB:1:500-1:2000, ELISA:1:40000
Form	Liquid
Conjugate	Non-conjugated
Storage Buffer	Liquid in PBS containing 50% glycerol, 0.5% BSA and 0.02% sodium azide.
Purification Method	The antibody was affinity-purified from rabbit antiserum by affinity-chromatography using epitope-specific immunogen.
Isotype	IgG
Alias	NSF; Vesicle-fusing ATPase; N-ethylmaleimide-sensitive fusion protein; NEM-sensitive fusion protein; Vesicular-fusion protein NSF
Immunogen Species	Homo sapiens (Human)
Target Names	NSF

Image



Western Blot analysis of CoLo cells using NSF Polyclonal Antibody

Usage

For Research Use Only. Not for use in diagnostic or therapeutic procedures.