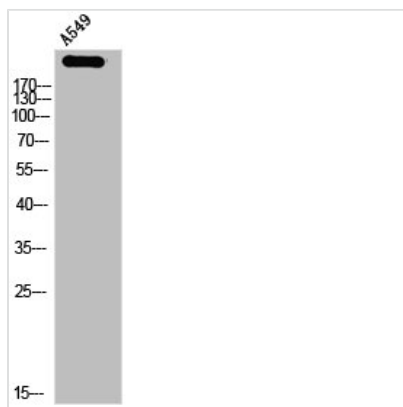




NUMA1 Antibody

Product Code	CSB-PA020178
Storage	Upon receipt, store at -20°C or -80°C. Avoid repeated freeze.
Uniprot No.	Q14980
Immunogen	Synthesized peptide derived from the N-terminal region of Human NuMA.
Raised In	Rabbit
Species Reactivity	Human
Tested Applications	WB, IHC, ELISA; WB:1:500-1:2000, IHC:1:100-1:300, ELISA:1:5000
Form	Liquid
Conjugate	Non-conjugated
Storage Buffer	Liquid in PBS containing 50% glycerol, 0.5% BSA and 0.02% sodium azide.
Purification Method	The antibody was affinity-purified from rabbit antiserum by affinity-chromatography using epitope-specific immunogen.
Isotype	IgG
Alias	NUMA1; NUMA; Nuclear mitotic apparatus protein 1; NuMA protein; SP-H antigen
Immunogen Species	Homo sapiens (Human)
Target Names	NUMA1

Image



Western Blot analysis of A549 cells using NuMA Polyclonal Antibody

Usage

For Research Use Only. Not for use in diagnostic or therapeutic procedures.