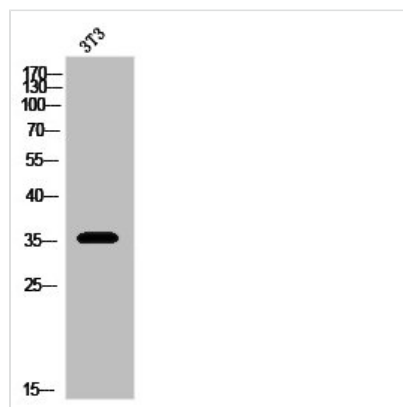




OPRD1 Antibody

Product Code	CSB-PA020188
Storage	Upon receipt, store at -20°C or -80°C. Avoid repeated freeze.
Uniprot No.	P41143
Immunogen	Synthesized peptide derived from the C-terminal region of Human DOR-1.
Raised In	Rabbit
Species Reactivity	Human
Tested Applications	WB, ELISA; WB:1:500-1:2000, ELISA:1:5000
Form	Liquid
Conjugate	Non-conjugated
Storage Buffer	Liquid in PBS containing 50% glycerol, 0.5% BSA and 0.02% sodium azide.
Purification Method	The antibody was affinity-purified from rabbit antiserum by affinity-chromatography using epitope-specific immunogen.
Isotype	IgG
Alias	OPRD1; OPRD; Delta-type opioid receptor; D-OR-1; DOR-1
Immunogen Species	Homo sapiens (Human)
Target Names	OPRD1

Image



Western Blot analysis of 3T3 cells using DOR-1 Polyclonal Antibody

Usage

For Research Use Only. Not for use in diagnostic or therapeutic procedures.