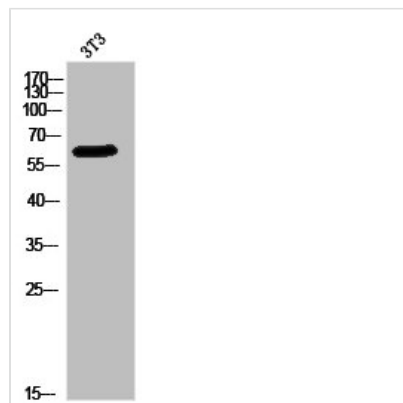




PAK1/PAK2/PAK3 Antibody

Product Code	CSB-PA020215
Storage	Upon receipt, store at -20°C or -80°C. Avoid repeated freeze.
Uniprot No.	Q13153/Q13177/O75914
Immunogen	Synthesized peptide derived from Human PAK $\alpha/\beta/\gamma$ around the non-phosphorylation site of T423/402/421.
Raised In	Rabbit
Species Reactivity	Human, Mouse, Rat
Tested Applications	WB, IHC, ELISA; WB:1:500-1:2000, IHC:1:100-1:300, ELISA:1:20000
Form	Liquid
Conjugate	Non-conjugated
Storage Buffer	Liquid in PBS containing 50% glycerol, 0.5% BSA and 0.02% sodium azide.
Purification Method	The antibody was affinity-purified from rabbit antiserum by affinity-chromatography using epitope-specific immunogen.
Isotype	IgG
Alias	PAK1; Serine/threonine-protein kinase PAK 1; Alpha-PAK; p21-activated kinase 1; PAK-1; p65-PAK; PAK2; Serine/threonine-protein kinase PAK 2; Gamma-PAK; PAK65; S6/H4 kinase; p21-activated kinase 2; PAK-2; p58; PAK3; OPHN3; Serine/threonine-p
Immunogen Species	Homo sapiens (Human)
Target Names	PAK1/PAK2/PAK3

Image



Western Blot analysis of 3T3 cells using PAK $\alpha/\beta/\gamma$ Polyclonal Antibody

Usage

For Research Use Only. Not for use in diagnostic or therapeutic procedures.