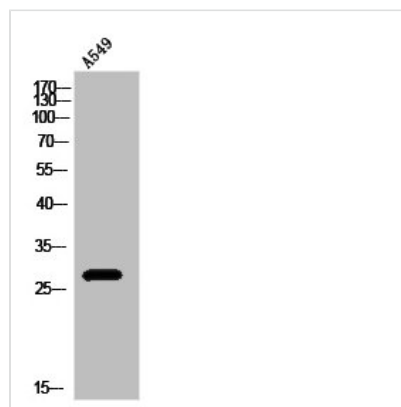




IL20 Antibody

Product Code	CSB-PA020218
Storage	Upon receipt, store at -20°C or -80°C. Avoid repeated freeze.
Uniprot No.	Q9NYY1
Immunogen	Synthesized peptide derived from the Internal region of Human IL-20.
Raised In	Rabbit
Species Reactivity	Human, Mouse
Tested Applications	WB, ELISA; WB:1:500-1:2000, ELISA:1:5000
Form	Liquid
Conjugate	Non-conjugated
Storage Buffer	Liquid in PBS containing 50% glycerol, 0.5% BSA and 0.02% sodium azide.
Purification Method	The antibody was affinity-purified from rabbit antiserum by affinity-chromatography using epitope-specific immunogen.
Isotype	IgG
Alias	IL20; ZCYTO10; Interleukin-20; IL-20; Cytokine Zcyto10
Immunogen Species	Homo sapiens (Human)
Target Names	IL20

Image



Western Blot analysis of A549 cells using IL-20 Polyclonal Antibody

Usage

For Research Use Only. Not for use in diagnostic or therapeutic procedures.