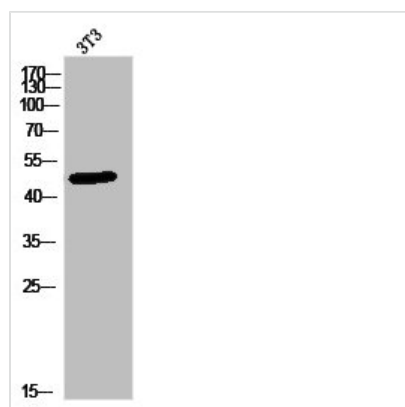




PLA1A Antibody

Product Code	CSB-PA020287
Storage	Upon receipt, store at -20°C or -80°C. Avoid repeated freeze.
Uniprot No.	Q53H76
Immunogen	Synthesized peptide derived from the C-terminal region of Human PLA1A.
Raised In	Rabbit
Species Reactivity	Human
Tested Applications	WB, IHC, ELISA; WB:1:500-1:2000, IHC:1:100-1:300, ELISA:1:5000
Form	Liquid
Conjugate	Non-conjugated
Storage Buffer	Liquid in PBS containing 50% glycerol, 0.5% BSA and 0.02% sodium azide.
Purification Method	The antibody was affinity-purified from rabbit antiserum by affinity-chromatography using epitope-specific immunogen.
Isotype	IgG
Alias	PLA1A; NMD; PSPLA1; Phospholipase A1 member A; Phosphatidylserine-specific phospholipase A1; PS-PLA1
Immunogen Species	Homo sapiens (Human)
Target Names	PLA1A

Image



Western Blot analysis of 3T3 cells using PLA1A Polyclonal Antibody

Usage

For Research Use Only. Not for use in diagnostic or therapeutic procedures.