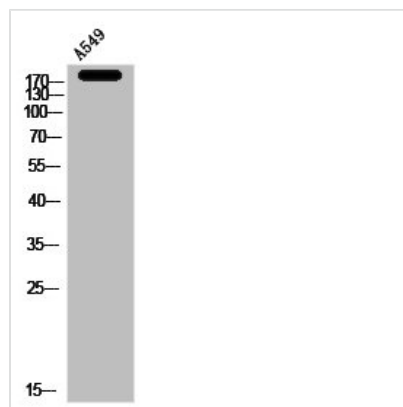




PEG3 Antibody

Product Code	CSB-PA030033
Storage	Upon receipt, store at -20°C or -80°C. Avoid repeated freeze.
Uniprot No.	Q9GZU2
Immunogen	Synthesized peptide derived from the Internal region of Human PEG3.
Raised In	Rabbit
Species Reactivity	Human
Tested Applications	WB, ELISA; WB:1:500-1:2000, ELISA:1:10000
Form	Liquid
Conjugate	Non-conjugated
Storage Buffer	Liquid in PBS containing 50% glycerol, 0.5% BSA and 0.02% sodium azide.
Purification Method	The antibody was affinity-purified from rabbit antiserum by affinity-chromatography using epitope-specific immunogen.
Isotype	IgG
Alias	PEG3; KIAA0287; ZSCAN24; Paternally-expressed gene 3 protein; Zinc finger and SCAN domain-containing protein 24
Immunogen Species	Homo sapiens (Human)
Target Names	PEG3

Image



Western Blot analysis of A549 cells using PEG3 Polyclonal Antibody

Usage

For Research Use Only. Not for use in diagnostic or therapeutic procedures.