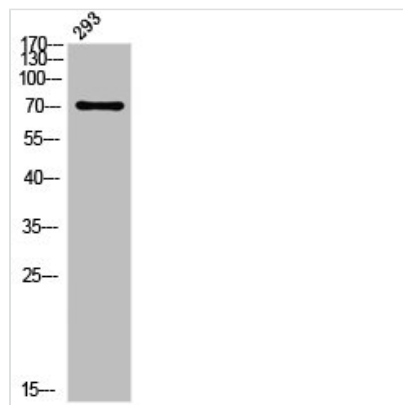




# Phospho-PLK1 (T210) Antibody

<b>Product Code</b>	CSB-PA030087
<b>Storage</b>	Upon receipt, store at -20°C or -80°C. Avoid repeated freeze.
<b>Uniprot No.</b>	P53350
<b>Immunogen</b>	Synthesized peptide derived from Human Plk around the phosphorylation site of T210.
<b>Raised In</b>	Rabbit
<b>Species Reactivity</b>	Human,Mouse,Rat
<b>Tested Applications</b>	WB, IHC, ELISA; IHC:1:100-1:300, ELISA:1:5000
<b>Form</b>	Liquid
<b>Conjugate</b>	Non-conjugated
<b>Storage Buffer</b>	Liquid in PBS containing 50% glycerol, 0.5% BSA and 0.02% sodium azide.
<b>Purification Method</b>	The antibody was affinity-purified from rabbit antiserum by affinity-chromatography using epitope-specific immunogen.
<b>Isotype</b>	IgG
<b>Alias</b>	PLK1; PLK; Serine/threonine-protein kinase PLK1; Polo-like kinase 1; PLK-1; Serine/threonine-protein kinase 13; STPK13
<b>Immunogen Species</b>	Homo sapiens (Human)
<b>Target Names</b>	PLK1

## Image



Western blot analysis of 293 using p-Plk (T210) antibody.

## Usage

For Research Use Only. Not for use in diagnostic or therapeutic procedures.