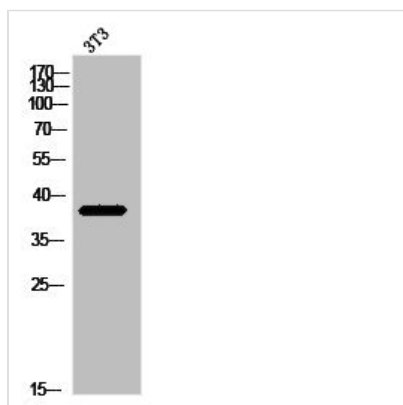




MRPL39 Antibody

Product Code	CSB-PA030110
Storage	Upon receipt, store at -20°C or -80°C. Avoid repeated freeze.
Uniprot No.	Q9NYK5
Immunogen	Synthesized peptide derived from the C-terminal region of Human MRP-L39.
Raised In	Rabbit
Species Reactivity	Human
Tested Applications	WB, IHC, ELISA; WB:1:500-1:2000, IHC:1:100-1:300, ELISA:1:40000
Form	Liquid
Conjugate	Non-conjugated
Storage Buffer	Liquid in PBS containing 50% glycerol, 0.5% BSA and 0.02% sodium azide.
Purification Method	The antibody was affinity-purified from rabbit antiserum by affinity-chromatography using epitope-specific immunogen.
Isotype	IgG
Alias	MRPL39; C21orf92; MRPL5; RPML5; MSTP003; PRED22; 39S ribosomal protein L39; mitochondrial; L39mt; MRP-L39; 39S ribosomal protein L5, mitochondrial; L5mt; MRP-L5
Immunogen Species	Homo sapiens (Human)
Target Names	MRPL39

Image



Western Blot analysis of 3T3 cells using MRP-L39 Polyclonal Antibody

Usage

For Research Use Only. Not for use in diagnostic or therapeutic procedures.