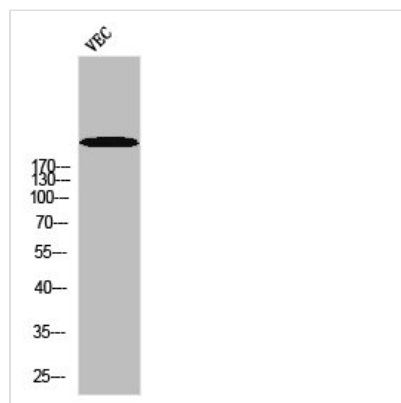




Phospho-POLR2A (S1619) Antibody

Product Code	CSB-PA030114
Storage	Upon receipt, store at -20°C or -80°C. Avoid repeated freeze.
Uniprot No.	P24928
Immunogen	Synthesized peptide derived from Human Rpb1 around the phosphorylation site of S1619.
Raised In	Rabbit
Species Reactivity	Human,Mouse,Rat,Monkey
Tested Applications	WB,IHC,IF,ELISA;WB:1/500-1/2000.IHC:1/100-1/300.IF:1/200-1/1000.ELISA:1/10000
Form	Liquid
Conjugate	Non-conjugated
Storage Buffer	Liquid in PBS containing 50% glycerol, 0.5% BSA and 0.02% sodium azide.
Purification Method	The antibody was affinity-purified from rabbit antiserum by affinity-chromatography using epitope-specific immunogen.
Isotype	IgG
Alias	POLR2A; POLR2; DNA-directed RNA polymerase II subunit RPB1; RNA polymerase II subunit B1; DNA-directed RNA polymerase II subunit A; DNA-directed RNA polymerase III largest subunit; RNA-directed RNA polymerase II subunit RPB1
Species	Homo sapiens (Human)
Target Names	POLR2A

Image



Western blot analysis of VEC using p-Rpb1 (S1619) antibody.