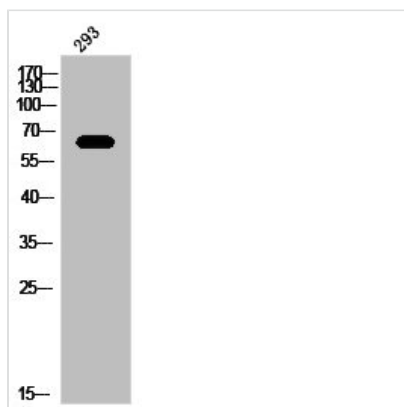




ENAH Antibody

Product Code	CSB-PA030227
Storage	Upon receipt, store at -20°C or -80°C. Avoid repeated freeze.
Uniprot No.	Q8N8S7
Immunogen	Synthesized peptide derived from the C-terminal region of Human Mena.
Raised In	Rabbit
Species Reactivity	Human, Mouse, Rat
Tested Applications	WB, IHC, ELISA; WB:1:500-1:2000, IHC:1:100-1:300, ELISA:1:10000
Form	Liquid
Conjugate	Non-conjugated
Storage Buffer	Liquid in PBS containing 50% glycerol, 0.5% BSA and 0.02% sodium azide.
Purification Method	The antibody was affinity-purified from rabbit antiserum by affinity-chromatography using epitope-specific immunogen.
Isotype	IgG
Alias	ENAH; MENA; Protein enabled homolog
Immunogen Species	Homo sapiens (Human)
Target Names	ENAH

Image



Western Blot analysis of 293 cells using Mena Polyclonal Antibody

Usage

For Research Use Only. Not for use in diagnostic or therapeutic procedures.