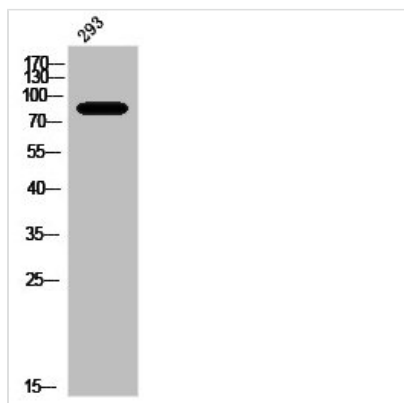




Phospho- PRKCA/PRKCB/PRKCD/PRKCE/PRKCG/PRKCH/ PRKCQ/PRKCZ (T497) Antibody

| | |
|----------------------------|--|
| Product Code | CSB-PA030240 |
| Storage | Upon receipt, store at -20°C or -80°C. Avoid repeated freeze. |
| Uniprot No. | P17252/P05771/Q05655/Q02156/P05129/P24723/Q04759/Q05513 |
| Immunogen | Synthesized peptide derived from Human PKC around the phosphorylation site of T497. |
| Raised In | Rabbit |
| Species Reactivity | Human,Mouse,Rat |
| Tested Applications | WB, IHC, IF, ELISA; WB:1:500-1:2000, IHC:1:100-1:300, IF:1:200-1:1000, ELISA:1:40000 |
| Form | Liquid |
| Conjugate | Non-conjugated |
| Storage Buffer | Liquid in PBS containing 50% glycerol, 0.5% BSA and 0.02% sodium azide. |
| Purification Method | The antibody was affinity-purified from rabbit antiserum by affinity-chromatography using epitope-specific immunogen. |
| Isotype | IgG |
| Alias | PRKCA; PKCA; PRKACA; Protein kinase C alpha type; PKC-A; PKC-alpha; PRKCB; PKCB; PRKCB1; Protein kinase C beta type; PKC-B; PKC-beta; PRKCD; Protein kinase C delta type; Tyrosine-protein kinase PRKCD; nPKC-delta; PRKCE; PKCE; Protein kinase |
| Immunogen Species | Homo sapiens (Human) |
| Target Names | PRKCA/PRKCB/PRKCD/PRKCE/PRKCG/PRKCH/PRKCQ/PRKCZ |

Image



Western Blot analysis of 293 cells using Phospho-PKC (T497) Polyclonal Antibody

Usage

For Research Use Only. Not for use in diagnostic or therapeutic procedures.