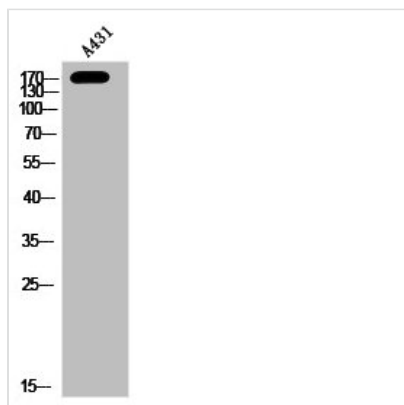




Phospho-PRKD1 (S910) Antibody

Product Code	CSB-PA030260
Storage	Upon receipt, store at -20°C or -80°C. Avoid repeated freeze.
Uniprot No.	Q15139
Immunogen	Synthesized peptide derived from Human PKD1 around the phosphorylation site of S910.
Raised In	Rabbit
Species Reactivity	Human,Mouse,Rat
Tested Applications	WB, ELISA; WB:1:500-1:2000, ELISA:1:10000
Form	Liquid
Conjugate	Non-conjugated
Storage Buffer	Liquid in PBS containing 50% glycerol, 0.5% BSA and 0.02% sodium azide.
Purification Method	The antibody was affinity-purified from rabbit antiserum by affinity-chromatography using epitope-specific immunogen.
Isotype	IgG
Alias	PRKD1; PKD; PKD1; PRKCM; Serine/threonine-protein kinase D1; Protein kinase C mu type; Protein kinase D; nPKC-D1; nPKC-mu
Immunogen Species	Homo sapiens (Human)
Target Names	PRKD1

Image



Western Blot analysis of A431 cells using Phospho-PRKD1 (S910) Polyclonal Antibody

Usage

For Research Use Only. Not for use in diagnostic or therapeutic procedures.