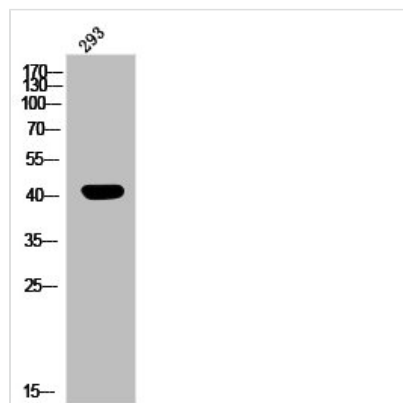




Phospho-MAP2K1 (T292) Antibody

Product Code	CSB-PA030296
Storage	Upon receipt, store at -20°C or -80°C. Avoid repeated freeze.
Uniprot No.	Q02750
Immunogen	Synthesized peptide derived from Human MEK-1 around the phosphorylation site of T292.
Raised In	Rabbit
Species Reactivity	Human,Mouse,Rat
Tested Applications	WB, IHC, IF, ELISA; WB:1:500-1:2000, IHC:1:100-1:300, IF:1:200-1:1000, ELISA:1:10000
Form	Liquid
Conjugate	Non-conjugated
Storage Buffer	Liquid in PBS containing 50% glycerol, 0.5% BSA and 0.02% sodium azide.
Purification Method	The antibody was affinity-purified from rabbit antiserum by affinity-chromatography using epitope-specific immunogen.
Isotype	IgG
Alias	MAP2K1; MEK1; PRKMK1; Dual specificity mitogen-activated protein kinase kinase 1; MAP kinase kinase 1; MAPKK 1; MKK1; ERK activator kinase 1; MAPK/ERK kinase 1; MEK 1
Immunogen Species	Homo sapiens (Human)
Target Names	MAP2K1

Image



Western Blot analysis of 293 cells using Phospho-MEK-1 (T292) Polyclonal Antibody

Usage

For Research Use Only. Not for use in diagnostic or therapeutic procedures.