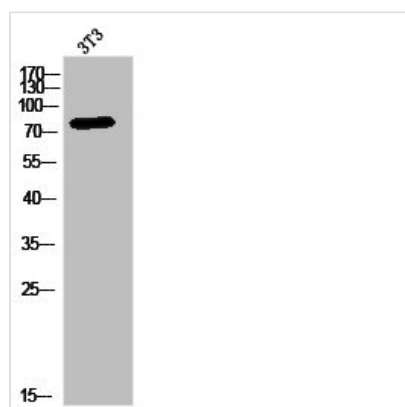




MDM1 Antibody

Product Code	CSB-PA040028
Storage	Upon receipt, store at -20°C or -80°C. Avoid repeated freeze.
Uniprot No.	Q8TC05
Immunogen	Synthesized peptide derived from the C-terminal region of Human MDM1.
Raised In	Rabbit
Species Reactivity	Human, Mouse, Rat
Tested Applications	WB, ELISA; WB:1:500-1:2000, ELISA:1:5000
Form	Liquid
Conjugate	Non-conjugated
Storage Buffer	Liquid in PBS containing 50% glycerol, 0.5% BSA and 0.02% sodium azide.
Purification Method	The antibody was affinity-purified from rabbit antiserum by affinity-chromatography using epitope-specific immunogen.
Isotype	IgG
Alias	MDM1; Nuclear protein MDM1
Immunogen Species	Homo sapiens (Human)
Target Names	MDM1

Image



Western Blot analysis of 3T3 cells using MDM1 Polyclonal Antibody

Usage

For Research Use Only. Not for use in diagnostic or therapeutic procedures.