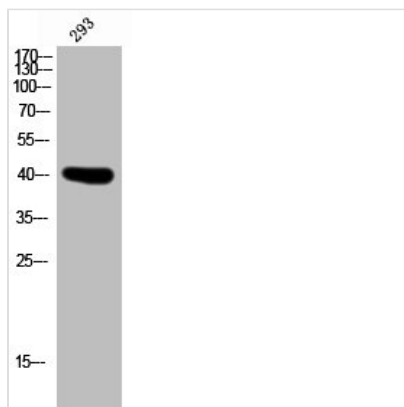




PTGDR Antibody

Product Code	CSB-PA040057
Storage	Upon receipt, store at -20°C or -80°C. Avoid repeated freeze.
Uniprot No.	Q13258
Immunogen	Synthesized peptide derived from the C-terminal region of Human PD2R.
Raised In	Rabbit
Species Reactivity	Human
Tested Applications	WB, IHC, IF, ELISA; WB:1:500-1:2000, IHC:1:100-1:300, IF:1:200-1:1000, ELISA:1:5000
Form	Liquid
Conjugate	Non-conjugated
Storage Buffer	Liquid in PBS containing 50% glycerol, 0.5% BSA and 0.02% sodium azide.
Purification Method	The antibody was affinity-purified from rabbit antiserum by affinity-chromatography using epitope-specific immunogen.
Isotype	IgG
Alias	PTGDR; Prostaglandin D2 receptor; PGD receptor; PGD2 receptor; Prostanoid DP receptor
Immunogen Species	Homo sapiens (Human)
Target Names	PTGDR

Image



Western Blot analysis of 293 cells using PD2R Polyclonal Antibody

Usage

For Research Use Only. Not for use in diagnostic or therapeutic procedures.