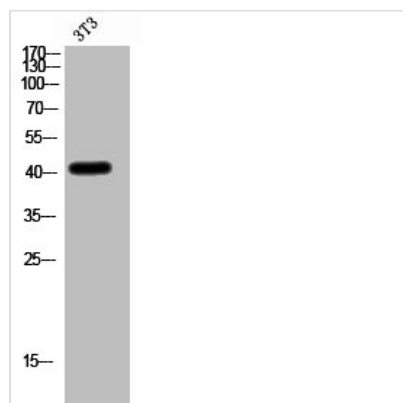




CADM3 Antibody

Product Code	CSB-PA040111
Storage	Upon receipt, store at -20°C or -80°C. Avoid repeated freeze.
Uniprot No.	Q8N126
Immunogen	Synthesized peptide derived from the Internal region of Human IGSF4B.
Raised In	Rabbit
Species Reactivity	Human,Mouse,Rat
Tested Applications	WB, IHC, IF, ELISA; WB:1:500-1:2000, IHC:1:100-1:300, IF:1:200-1:1000, ELISA:1:5000
Form	Liquid
Conjugate	Non-conjugated
Storage Buffer	Liquid in PBS containing 50% glycerol, 0.5% BSA and 0.02% sodium azide.
Purification Method	The antibody was affinity-purified from rabbit antiserum by affinity-chromatography using epitope-specific immunogen.
Isotype	IgG
Alias	CADM3; IGSF4B; NECL1; SYNCAM3; TSLL1; Cell adhesion molecule 3; Brain immunoglobulin receptor; Immunoglobulin superfamily member 4B; IgSF4B; Nectin-like protein 1; NECL-1; Synaptic cell adhesion molecule 3; SynCAM3; TSLC1-like protein 1; TS
Immunogen Species	Homo sapiens (Human)
Target Names	CADM3

Image



Western Blot analysis of 3T3 cells using IGSF4B Polyclonal Antibody