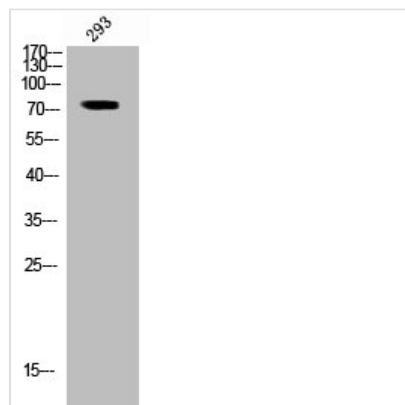




Phospho-RAF1 (S296) Antibody

Product Code	CSB-PA040152
Storage	Upon receipt, store at -20°C or -80°C. Avoid repeated freeze.
Uniprot No.	P04049
Immunogen	Synthesized peptide derived from Human Raf-1 around the phosphorylation site of S296.
Raised In	Rabbit
Species Reactivity	Human,Mouse,Rat
Tested Applications	WB, IHC, ELISA; WB:1:500-1:2000, IHC:1:100-1:300, ELISA:1:20000
Form	Liquid
Conjugate	Non-conjugated
Storage Buffer	Liquid in PBS containing 50% glycerol, 0.5% BSA and 0.02% sodium azide.
Purification Method	The antibody was affinity-purified from rabbit antiserum by affinity-chromatography using epitope-specific immunogen.
Isotype	IgG
Alias	RAF1; RAF; RAF proto-oncogene serine/threonine-protein kinase; Proto-oncogene c-RAF; cRaf; Raf-1
Immunogen Species	Homo sapiens (Human)
Target Names	RAF1

Image



Western Blot analysis of 293 cells using Phospho-Raf-1 (S296) Polyclonal Antibody