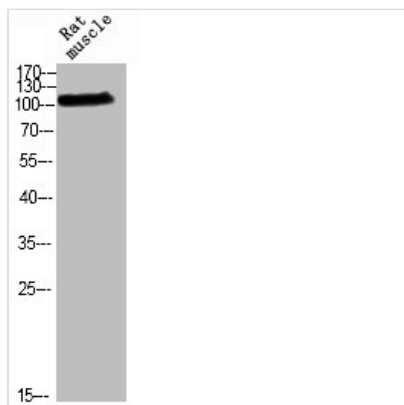




Phospho-RB1 (T826) Antibody

Product Code	CSB-PA040166
Storage	Upon receipt, store at -20°C or -80°C. Avoid repeated freeze.
Uniprot No.	P06400
Immunogen	Synthesized peptide derived from Human Rb around the phosphorylation site of T826.
Raised In	Rabbit
Species Reactivity	Human,Mouse,Rat
Tested Applications	WB, IHC, IF, ELISA; WB:1:500-1:2000, IHC:1:100-1:300, IF:1:200-1:1000, ELISA:1:10000
Form	Liquid
Conjugate	Non-conjugated
Storage Buffer	Liquid in PBS containing 50% glycerol, 0.5% BSA and 0.02% sodium azide.
Purification Method	The antibody was affinity-purified from rabbit antiserum by affinity-chromatography using epitope-specific immunogen.
Isotype	IgG
Alias	RB1; Retinoblastoma-associated protein; p105-Rb; pRb; Rb; pp110
Immunogen Species	Homo sapiens (Human)
Target Names	RB1

Image



Western blot analysis of RAT-muscle using p-Rb (T826) antibody.