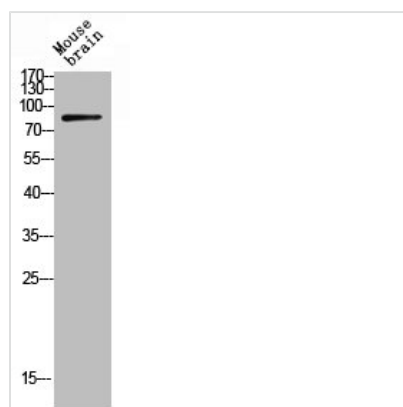




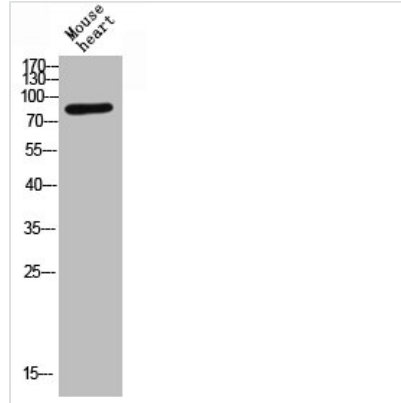
# Phospho-BCL6 (S333) Antibody

<b>Product Code</b>	CSB-PA040219
<b>Storage</b>	Upon receipt, store at -20°C or -80°C. Avoid repeated freeze.
<b>Uniprot No.</b>	P41182
<b>Immunogen</b>	Synthesized peptide derived from Human Bcl-6 around the phosphorylation site of S333.
<b>Raised In</b>	Rabbit
<b>Species Reactivity</b>	Human,Mouse,Rat
<b>Tested Applications</b>	WB, ELISA; WB:1:500-1:2000, ELISA:1:5000
<b>Form</b>	Liquid
<b>Conjugate</b>	Non-conjugated
<b>Storage Buffer</b>	Liquid in PBS containing 50% glycerol, 0.5% BSA and 0.02% sodium azide.
<b>Purification Method</b>	The antibody was affinity-purified from rabbit antiserum by affinity-chromatography using epitope-specific immunogen.
<b>Isotype</b>	IgG
<b>Alias</b>	BCL6; BCL5; LAZ3; ZBTB27; ZNF51; B-cell lymphoma 6 protein; BCL-6; B-cell lymphoma 5 protein; BCL-5; Protein LAZ-3; Zinc finger and BTB domain-containing protein 27; Zinc finger protein 51
<b>Immunogen Species</b>	Homo sapiens (Human)
<b>Target Names</b>	BCL6

## Image



Western Blot analysis of MOUSE-HEART cells using Phospho-Bcl-6 (S333) Polyclonal Antibody



Western blot analysis of mouse-heart lysis using Phospho-Bcl-6 (S333) antibody.

## Usage

For Research Use Only. Not for use in diagnostic or therapeutic procedures.