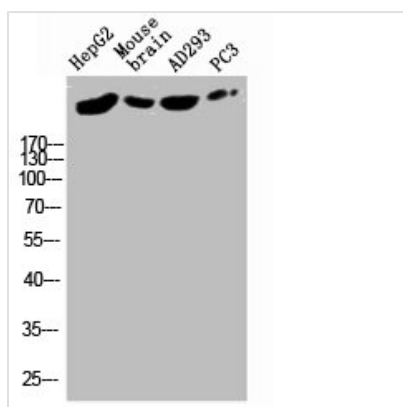




RYR2 Antibody

Product Code	CSB-PA040283
Storage	Upon receipt, store at -20°C or -80°C. Avoid repeated freeze.
Uniprot No.	Q92736
Immunogen	Synthesized peptide derived from Human RyR-2 around the non-phosphorylation site of S2808.
Raised In	Rabbit
Species Reactivity	Human,Mouse,Rat
Tested Applications	WB, IHC, IF, ELISA; IHC:1:100-1:300, IF:1:200-1:1000, ELISA:1:5000
Form	Liquid
Conjugate	Non-conjugated
Storage Buffer	Liquid in PBS containing 50% glycerol, 0.5% BSA and 0.02% sodium azide.
Purification Method	The antibody was affinity-purified from rabbit antiserum by affinity-chromatography using epitope-specific immunogen.
Isotype	IgG
Alias	RYR2; Ryanodine receptor 2; RYR-2; RyR2; hRYR-2; Cardiac muscle ryanodine receptor; Cardiac muscle ryanodine receptor-calcium release channel; Type 2 ryanodine receptor
Immunogen Species	Homo sapiens (Human)
Target Names	RYR2

Image



Western Blot analysis of HepG2-UV MOUSE-BRAIN AD293 PC-3 cells using RyR-2 Polyclonal Antibody

Usage

For Research Use Only. Not for use in diagnostic or therapeutic procedures.