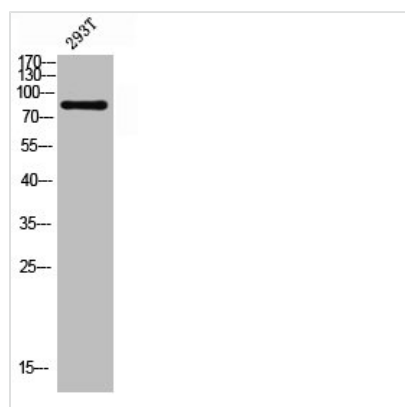




RFWD2 Antibody

Product Code	CSB-PA050026
Storage	Upon receipt, store at -20°C or -80°C. Avoid repeated freeze.
Uniprot No.	Q8NHY2
Immunogen	Synthesized peptide derived from Human COP1 around the non-phosphorylation site of S387.
Raised In	Rabbit
Species Reactivity	Human, Mouse
Tested Applications	WB, ELISA; WB:1:500-1:2000, ELISA:1:40000
Form	Liquid
Conjugate	Non-conjugated
Storage Buffer	Liquid in PBS containing 50% glycerol, 0.5% BSA and 0.02% sodium azide.
Purification Method	The antibody was affinity-purified from rabbit antiserum by affinity-chromatography using epitope-specific immunogen.
Isotype	IgG
Alias	RFWD2; COP1; RNF200; E3 ubiquitin-protein ligase RFWD2; Constitutive photomorphogenesis protein 1 homolog; hCOP1; RING finger and WD repeat domain protein 2; RING finger protein 200
Immunogen Species	Homo sapiens (Human)
Target Names	RFWD2

Image



Western blot analysis of 293T lysis using COP1 antibody.

Usage For Research Use Only. Not for use in diagnostic or therapeutic procedures.