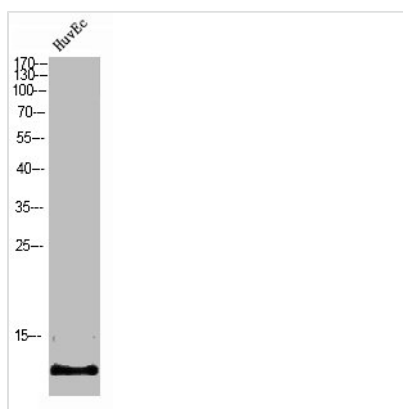




S100A7L2 Antibody

Product Code	CSB-PA050051
Storage	Upon receipt, store at -20°C or -80°C. Avoid repeated freeze.
Uniprot No.	Q5SY68
Immunogen	Synthesized peptide derived from the Internal region of Human S-100A7L2.
Raised In	Rabbit
Species Reactivity	Human
Tested Applications	WB, ELISA; WB:1:500-1:2000, ELISA:1:10000
Form	Liquid
Conjugate	Non-conjugated
Storage Buffer	Liquid in PBS containing 50% glycerol, 0.5% BSA and 0.02% sodium azide.
Purification Method	The antibody was affinity-purified from rabbit antiserum by affinity-chromatography using epitope-specific immunogen.
Isotype	IgG
Alias	S100A7L2; S100A7B; Protein S100-A7-like 2; S100 calcium-binding protein A7-like 2
Immunogen Species	Homo sapiens (Human)
Target Names	S100A7L2

Image



Western Blot analysis of HuvEc cells using S-100A7L2 Polyclonal Antibody

Usage

For Research Use Only. Not for use in diagnostic or therapeutic procedures.