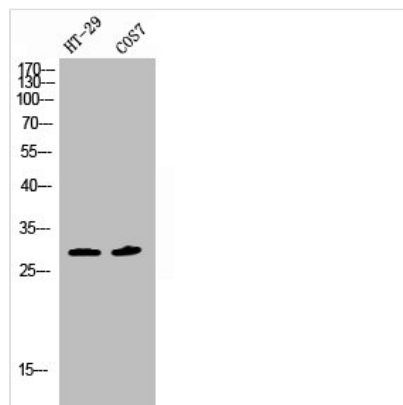




Phospho-SNAI1 (S246) Antibody

Product Code	CSB-PA050110
Storage	Upon receipt, store at -20°C or -80°C. Avoid repeated freeze.
Uniprot No.	O95863
Immunogen	Synthesized peptide derived from Human SNAI 1 around the phosphorylation site of S246.
Raised In	Rabbit
Species Reactivity	Human,Mouse,Monkey
Tested Applications	WB, IHC, IF, ELISA; WB:1:500-1:2000, IHC:1:100-1:300, IF:1:200-1:1000, ELISA:1:5000
Form	Liquid
Conjugate	Non-conjugated
Storage Buffer	Liquid in PBS containing 50% glycerol, 0.5% BSA and 0.02% sodium azide.
Purification Method	The antibody was affinity-purified from rabbit antiserum by affinity-chromatography using epitope-specific immunogen.
Isotype	IgG
Alias	SNAI1; SNAH; Zinc finger protein SNAI1; Protein snail homolog 1; Protein sna
Immunogen Species	Homo sapiens (Human)
Target Names	SNAI1

Image



Western Blot analysis of HT29 COS7 cells using Phospho-SNAI 1 (S246) Polyclonal Antibody