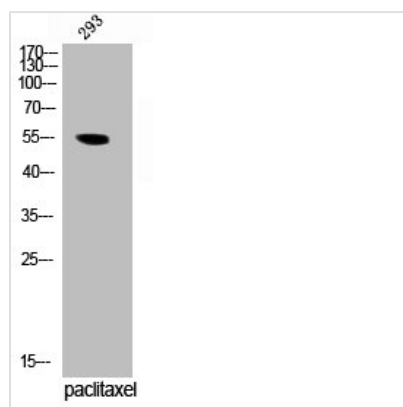




Phospho-TERF1 (S219) Antibody

Product Code	CSB-PA050239
Storage	Upon receipt, store at -20°C or -80°C. Avoid repeated freeze.
Uniprot No.	P54274
Immunogen	Synthesized peptide derived from Human TRF1 around the phosphorylation site of S219.
Raised In	Rabbit
Species Reactivity	Human, Mouse
Tested Applications	WB, ELISA; WB:1:500-1:2000, ELISA:1:5000
Form	Liquid
Conjugate	Non-conjugated
Storage Buffer	Liquid in PBS containing 50% glycerol, 0.5% BSA and 0.02% sodium azide.
Purification Method	The antibody was affinity-purified from rabbit antiserum by affinity-chromatography using epitope-specific immunogen.
Isotype	IgG
Alias	TERF1; PIN2; TRBF1; TRF; TRF1; Telomeric repeat-binding factor 1; NIMA-interacting protein 2; TTAGGG repeat-binding factor 1; Telomeric protein Pin2/TRF1
Immunogen Species	Homo sapiens (Human)
Target Names	TERF1

Image



Western Blot analysis of 293 cells using Phospho-TRF1 (S219) Polyclonal Antibody

Usage For Research Use Only. Not for use in diagnostic or therapeutic procedures.