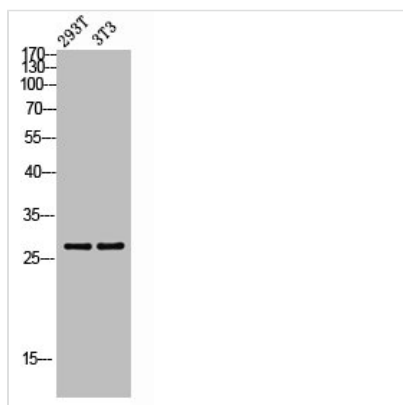




# TFAM Antibody

<b>Product Code</b>	CSB-PA050245
<b>Storage</b>	Upon receipt, store at -20°C or -80°C. Avoid repeated freeze.
<b>Uniprot No.</b>	Q00059
<b>Immunogen</b>	Synthesized peptide derived from the Internal region of Human mtTFA.
<b>Raised In</b>	Rabbit
<b>Species Reactivity</b>	Human
<b>Tested Applications</b>	WB, IHC, IF, ELISA; IHC:1:100-1:300, IF:1:200-1:1000, ELISA:1:20000
<b>Form</b>	Liquid
<b>Conjugate</b>	Non-conjugated
<b>Storage Buffer</b>	Liquid in PBS containing 50% glycerol, 0.5% BSA and 0.02% sodium azide.
<b>Purification Method</b>	The antibody was affinity-purified from rabbit antiserum by affinity-chromatography using epitope-specific immunogen.
<b>Isotype</b>	IgG
<b>Alias</b>	TFAM; TCF6; TCF6L2; Transcription factor A; mitochondrial; mtTFA; Mitochondrial transcription factor 1; MtTF1; Transcription factor 6; TCF-6; Transcription factor 6-like 2
<b>Immunogen Species</b>	Homo sapiens (Human)
<b>Target Names</b>	TFAM

## Image



Western blot analysis of 293T 3T3 lysis using mtTFA antibody.

**Usage** For Research Use Only. Not for use in diagnostic or therapeutic procedures.