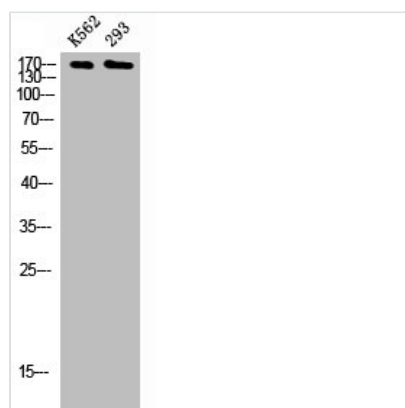




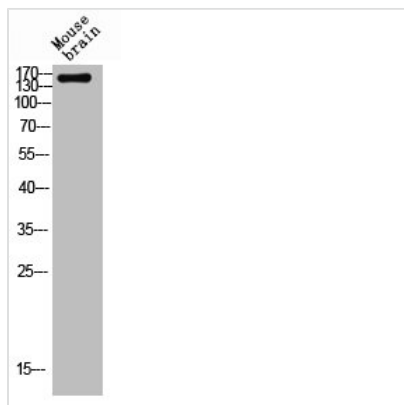
TOP2A Antibody

| | |
|----------------------------|---|
| Product Code | CSB-PA050288 |
| Storage | Upon receipt, store at -20°C or -80°C. Avoid repeated freeze. |
| Uniprot No. | P11388 |
| Immunogen | Synthesized peptide derived from Human Topo II α around the non-phosphorylation site of S1525. |
| Raised In | Rabbit |
| Species Reactivity | Human, Mouse, Rat |
| Tested Applications | WB, IHC, ELISA; WB:1:500-1:2000, IHC:1:100-1:300, ELISA:1:20000 |
| Form | Liquid |
| Conjugate | Non-conjugated |
| Storage Buffer | Liquid in PBS containing 50% glycerol, 0.5% BSA and 0.02% sodium azide. |
| Purification Method | The antibody was affinity-purified from rabbit antiserum by affinity-chromatography using epitope-specific immunogen. |
| Isotype | IgG |
| Alias | TOP2A; TOP2; DNA topoisomerase 2-alpha; DNA topoisomerase II; alpha isozyme |
| Immunogen Species | Homo sapiens (Human) |
| Target Names | TOP2A |

Image



Western Blot analysis of K562 293 cells using Topo II α Polyclonal Antibody



Western blot analysis of mouse-brain lysis using Topo II α antibody.

Usage

For Research Use Only. Not for use in diagnostic or therapeutic procedures.