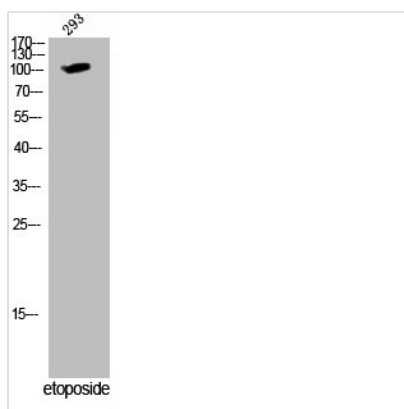




Phospho-WEE1 (S642) Antibody

Product Code	CSB-PA060083
Storage	Upon receipt, store at -20°C or -80°C. Avoid repeated freeze.
Uniprot No.	P30291
Immunogen	Synthesized peptide derived from Human Wee1 around the phosphorylation site of S642.
Raised In	Rabbit
Species Reactivity	Human,Mouse,Rat
Tested Applications	WB, ELISA; WB:1:500-1:2000, ELISA:1:5000
Form	Liquid
Conjugate	Non-conjugated
Storage Buffer	Liquid in PBS containing 50% glycerol, 0.5% BSA and 0.02% sodium azide.
Purification Method	The antibody was affinity-purified from rabbit antiserum by affinity-chromatography using epitope-specific immunogen.
Isotype	IgG
Alias	WEE1; Wee1-like protein kinase; WEE1hu; Wee1A kinase
Immunogen Species	Homo sapiens (Human)
Target Names	WEE1

Image



Western Blot analysis of 293 cells using Phospho-Wee1 (S642) Polyclonal Antibody

Usage

For Research Use Only. Not for use in diagnostic or therapeutic procedures.