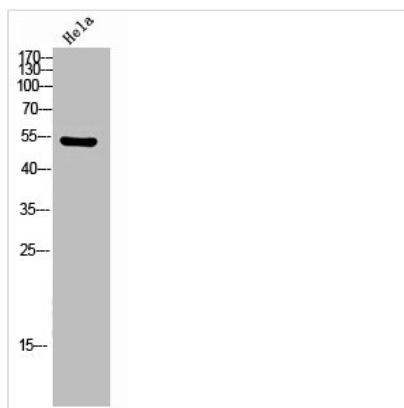




Phospho-CAMK2A/CAMK2D (T286) Antibody

Product Code	CSB-PA060210
Storage	Upon receipt, store at -20°C or -80°C. Avoid repeated freeze.
Uniprot No.	Q9UQM7/Q13557
Immunogen	Synthesized peptide derived from Human CaMKII α/δ around the phosphorylation site of T286.
Raised In	Rabbit
Species Reactivity	Human, Mouse, Rat
Tested Applications	WB, IHC, IF, ELISA; WB:1:500-1:2000, IHC:1:100-1:300, IF:1:200-1:1000, ELISA:1:10000
Form	Liquid
Conjugate	Non-conjugated
Storage Buffer	Liquid in PBS containing 50% glycerol, 0.5% BSA and 0.02% sodium azide.
Purification Method	The antibody was affinity-purified from rabbit antiserum by affinity-chromatography using epitope-specific immunogen.
Isotype	IgG
Alias	CAMK2A; CAMKA; KIAA0968; Calcium/calmodulin-dependent protein kinase type II subunit alpha; CaM kinase II subunit alpha; CaMK-II subunit alpha; CAMK2D; CAMKD; Calcium/calmodulin-dependent protein kinase type II subunit delta; CaM kinase II
Immunogen Species	Homo sapiens (Human)
Target Names	CAMK2A/CAMK2D

Image



Western Blot analysis of HELA cells using Phospho-CaMKII α/δ (T286) Polyclonal Antibody

Usage For Research Use Only. Not for use in diagnostic or therapeutic procedures.