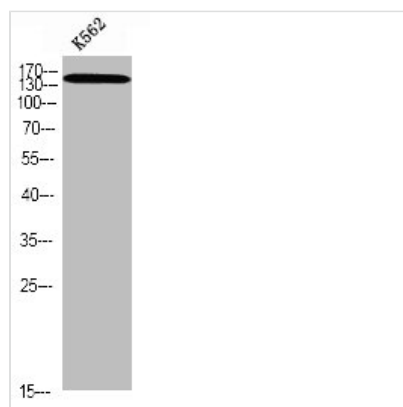




Phospho-SMC1A (S966) Antibody

Product Code	CSB-PA060230
Storage	Upon receipt, store at -20°C or -80°C. Avoid repeated freeze.
Uniprot No.	Q14683
Immunogen	Synthesized peptide derived from Human SMC1 around the phosphorylation site of S966.
Raised In	Rabbit
Species Reactivity	Human, Mouse, Rat
Tested Applications	WB, IHC, ELISA; WB:1:500-1:2000, IHC:1:100-1:300, ELISA:1:10000
Form	Liquid
Conjugate	Non-conjugated
Storage Buffer	Liquid in PBS containing 50% glycerol, 0.5% BSA and 0.02% sodium azide.
Purification Method	The antibody was affinity-purified from rabbit antiserum by affinity-chromatography using epitope-specific immunogen.
Isotype	IgG
Alias	SMC1A; DXS423E; KIAA0178; SB1.8; SMC1; SMC1L1; Structural maintenance of chromosomes protein 1A; SMC protein 1A; SMC-1-alpha; SMC-1A; Sb1.8
Immunogen Species	Homo sapiens (Human)
Target Names	SMC1A

Image



Western blot analysis of K562 using p-SMC1 (S966) antibody.

Usage

For Research Use Only. Not for use in diagnostic or therapeutic procedures.