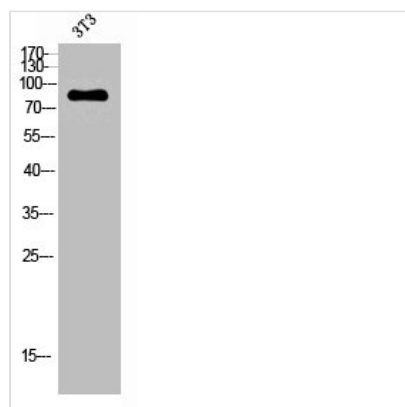




Phospho-ATRIP (S68) Antibody

| | |
|----------------------------|---|
| Product Code | CSB-PA060304 |
| Storage | Upon receipt, store at -20°C or -80°C. Avoid repeated freeze. |
| Uniprot No. | Q8WXE1 |
| Immunogen | Synthesized peptide derived from Human ATRIP around the phosphorylation site of S68. |
| Raised In | Rabbit |
| Species Reactivity | Human,Mouse,Rat |
| Tested Applications | WB, ELISA; WB:1:500-1:2000, ELISA:1:40000 |
| Form | Liquid |
| Conjugate | Non-conjugated |
| Storage Buffer | Liquid in PBS containing 50% glycerol, 0.5% BSA and 0.02% sodium azide. |
| Purification Method | The antibody was affinity-purified from rabbit antiserum by affinity-chromatography using epitope-specific immunogen. |
| Isotype | IgG |
| Alias | ATRIP; AGS1; ATR-interacting protein; ATM and Rad3-related-interacting protein |
| Immunogen Species | Homo sapiens (Human) |
| Target Names | ATRIP |

Image



Western Blot analysis of NIH-3T3 cells using Phospho-ATRIP (S68) Polyclonal Antibody