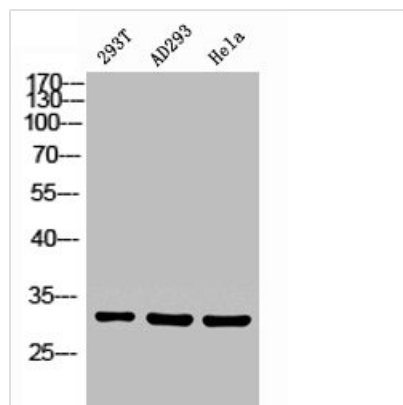




CBR1 Antibody

Product Code	CSB-PA070138
Storage	Upon receipt, store at -20°C or -80°C. Avoid repeated freeze.
Uniprot No.	P16152
Immunogen	Synthesized peptide derived from the Internal region of Human Carbonyl Reductase 1.
Raised In	Rabbit
Species Reactivity	Human
Tested Applications	WB, IHC, ELISA; WB:1:500-1:2000, IHC:1:100-1:300, ELISA:1:40000
Form	Liquid
Conjugate	Non-conjugated
Storage Buffer	Liquid in PBS containing 50% glycerol, 0.5% BSA and 0.02% sodium azide.
Purification Method	The antibody was affinity-purified from rabbit antiserum by affinity-chromatography using epitope-specific immunogen.
Isotype	IgG
Alias	CBR1; CBR; CRN; Carbonyl reductase [NADPH] 1; 15-hydroxyprostaglandin dehydrogenase [NADP(+)]; NADPH-dependent carbonyl reductase 1; Prostaglandin 9-ketoreductase; Prostaglandin-E(2) 9-reductase
Immunogen Species	Homo sapiens (Human)
Target Names	CBR1

Image



Western Blot analysis of 293T HELA using Carbonyl Reductase 1 Polyclonal Antibody.

Usage For Research Use Only. Not for use in diagnostic or therapeutic procedures.