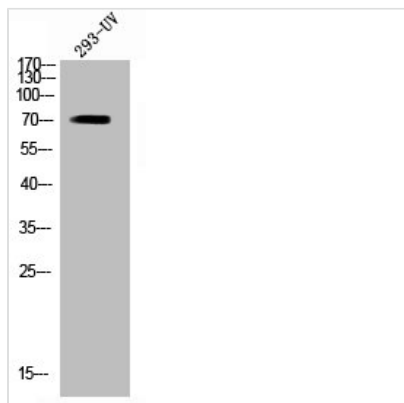




Phospho-RIPK2 (S176) Antibody

| | |
|----------------------------|--|
| Product Code | CSB-PA070142 |
| Storage | Upon receipt, store at -20°C or -80°C. Avoid repeated freeze. |
| Uniprot No. | O43353 |
| Immunogen | Synthesized peptide derived from Human RIP2 around the phosphorylation site of S176. |
| Raised In | Rabbit |
| Species Reactivity | Human, Mouse |
| Tested Applications | WB, IHC, ELISA; WB:1:500-1:2000, IHC:1:100-1:300, ELISA:1:40000 |
| Form | Liquid |
| Conjugate | Non-conjugated |
| Storage Buffer | Liquid in PBS containing 50% glycerol, 0.5% BSA and 0.02% sodium azide. |
| Purification Method | The antibody was affinity-purified from rabbit antiserum by affinity-chromatography using epitope-specific immunogen. |
| Isotype | IgG |
| Alias | RIPK2; CARDIAK; RICK; RIP2; Receptor-interacting serine/threonine-protein kinase 2; CARD-containing interleukin-1 beta-converting enzyme-associated kinase; CARD-containing IL-1 beta ICE-kinase; RIP-like-interacting CLARP kinase; Receptor-in |
| Immunogen Species | Homo sapiens (Human) |
| Target Names | RIPK2 |

Image



Western Blot analysis of 293 cells using Phospho-RIP2 (S176) Polyclonal Antibody

Usage

For Research Use Only. Not for use in diagnostic or therapeutic procedures.