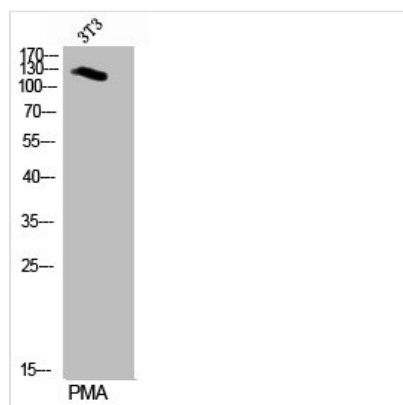




Phospho-PER2 (S662) Antibody

Product Code	CSB-PA070165
Storage	Upon receipt, store at -20°C or -80°C. Avoid repeated freeze.
Uniprot No.	O15055
Immunogen	Synthesized peptide derived from Human Per2 around the phosphorylation site of S662.
Raised In	Rabbit
Species Reactivity	Human, Mouse
Tested Applications	WB, IHC, ELISA; WB:1:500-1:2000, IHC:1:100-1:300, ELISA:1:5000
Form	Liquid
Conjugate	Non-conjugated
Storage Buffer	Liquid in PBS containing 50% glycerol, 0.5% BSA and 0.02% sodium azide.
Purification Method	The antibody was affinity-purified from rabbit antiserum by affinity-chromatography using epitope-specific immunogen.
Isotype	IgG
Alias	PER2; KIAA0347; Period circadian protein homolog 2; hPER2; Circadian clock protein PERIOD 2
Immunogen Species	Homo sapiens (Human)
Target Names	PER2

Image



Western Blot analysis of 3T3 cells using Phospho-Per2 (S662) Polyclonal Antibody

Usage

For Research Use Only. Not for use in diagnostic or therapeutic procedures.