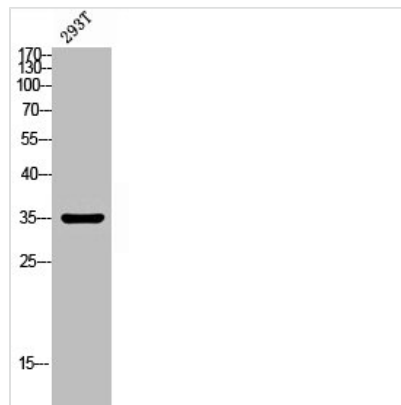




TECR Antibody

Product Code	CSB-PA080015
Storage	Upon receipt, store at -20°C or -80°C. Avoid repeated freeze.
Uniprot No.	Q9NZ01
Immunogen	Synthesized peptide derived from the C-terminal region of Human GPSN2.
Raised In	Rabbit
Species Reactivity	Human, Mouse, Rat
Tested Applications	WB, IHC, ELISA; IHC:1:100-1:300, ELISA:1:40000
Form	Liquid
Conjugate	Non-conjugated
Storage Buffer	Liquid in PBS containing 50% glycerol, 0.5% BSA and 0.02% sodium azide.
Purification Method	The antibody was affinity-purified from rabbit antiserum by affinity-chromatography using epitope-specific immunogen.
Isotype	IgG
Alias	TECR; GPSN2; SC2; Trans-2; 3-enoyl-CoA reductase; TER; Synaptic glycoprotein SC2
Immunogen Species	Homo sapiens (Human)
Target Names	TECR

Image



Western blot analysis of 293T lysis using GPSN2 antibody.

Usage

For Research Use Only. Not for use in diagnostic or therapeutic procedures.