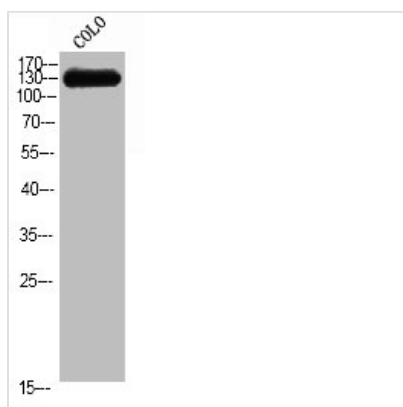




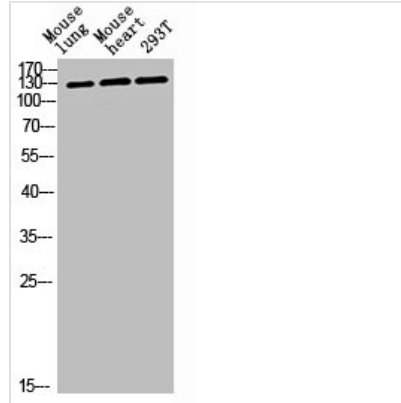
CEP135 Antibody

Product Code	CSB-PA080046
Storage	Upon receipt, store at -20°C or -80°C. Avoid repeated freeze.
Uniprot No.	Q66GS9
Immunogen	Synthesized peptide derived from the C-terminal region of Human CEP135.
Raised In	Rabbit
Species Reactivity	Human, Mouse
Tested Applications	WB, IHC, ELISA; WB:1:500-1:2000, IHC:1:100-1:300, ELISA:1:40000
Form	Liquid
Conjugate	Non-conjugated
Storage Buffer	Liquid in PBS containing 50% glycerol, 0.5% BSA and 0.02% sodium azide.
Purification Method	The antibody was affinity-purified from rabbit antiserum by affinity-chromatography using epitope-specific immunogen.
Isotype	IgG
Alias	CEP135; CEP4; KIAA0635; Centrosomal protein of 135 kDa; Cep135; Centrosomal protein 4
Immunogen Species	Homo sapiens (Human)
Target Names	CEP135

Image



Western Blot analysis of COLO cells using CEP135 Polyclonal Antibody



Western blot analysis of mouse-lung mouse-heart 293T lysis using CEP135 antibody.

Usage

For Research Use Only. Not for use in diagnostic or therapeutic procedures.