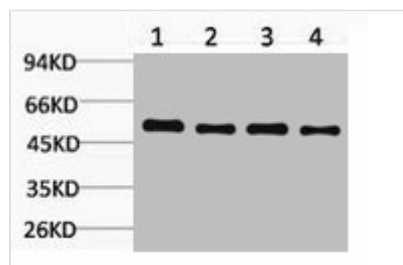




# LDHD Antibody

<b>Product Code</b>	CSB-PA080118
<b>Storage</b>	Upon receipt, store at -20°C or -80°C. Avoid repeated freeze.
<b>Uniprot No.</b>	Q86WU2
<b>Immunogen</b>	Recombinant Protein
<b>Raised In</b>	Rabbit
<b>Species Reactivity</b>	Human,Mouse,Rat
<b>Tested Applications</b>	WB;WB:1:1000-5000
<b>Form</b>	Liquid
<b>Conjugate</b>	Non-conjugated
<b>Storage Buffer</b>	PBS, pH 7.4, containing 0.5%BSA, 0.02% sodium azide as Preservative and 50% Glycerol.
<b>Isotype</b>	IgG
<b>Alias</b>	Probable D-lactate dehydrogenase, mitochondrial
<b>Immunogen Species</b>	Homo sapiens (Human)
<b>Target Names</b>	LDHD

## Image



Western blot analysis of 1) HeLa, 2) Mouse Skeletal Muscle, 3) Mouse Liver, 4) Rat Kidney, diluted at 1:5000.

## Usage

For Research Use Only. Not for use in diagnostic or therapeutic procedures.